

# Acton 5K Road Race, Acton MA

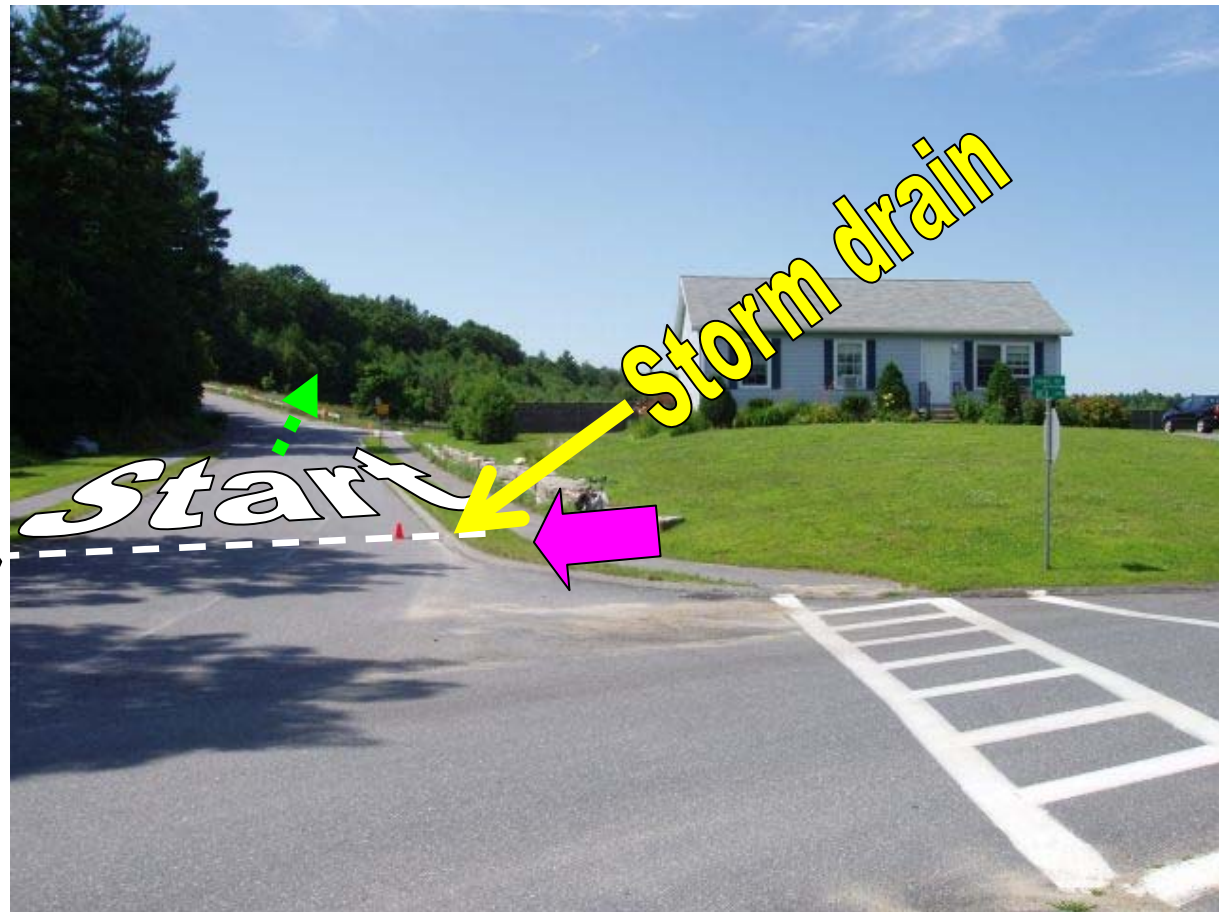
Detail of Start,  
Finish & Splits



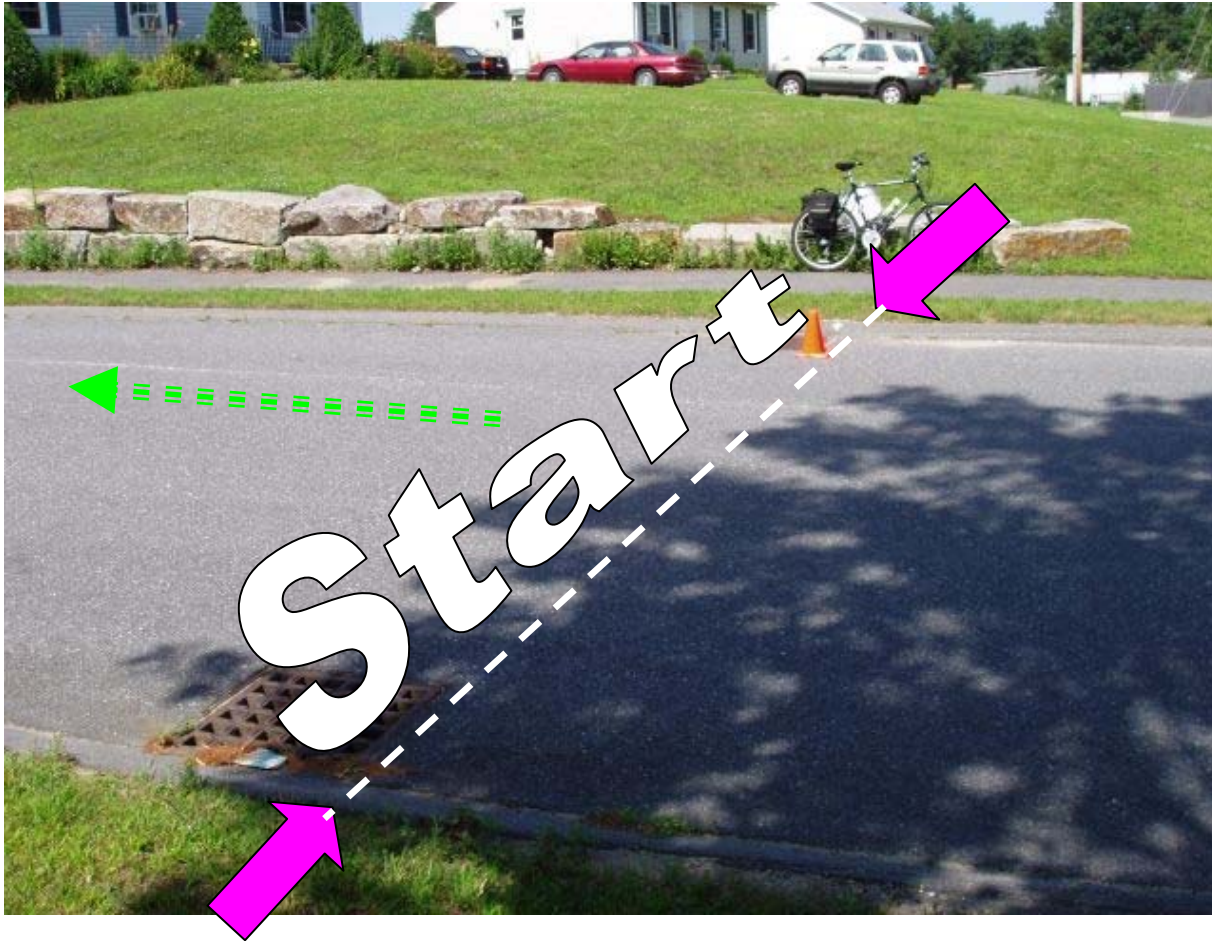
USATF Certification  
MA06015JK  
(Expires 31 Dec 2016)  
Measured 19 Jul 2006 by  
Justin Kuo <jkuo@usatfne.org>

# Start location

Start on Ledgerrock Way, just past Rex Lane. The leading edge of the two storm drain marks the start location. Runners head toward the NARA driveway entrance and turn right.

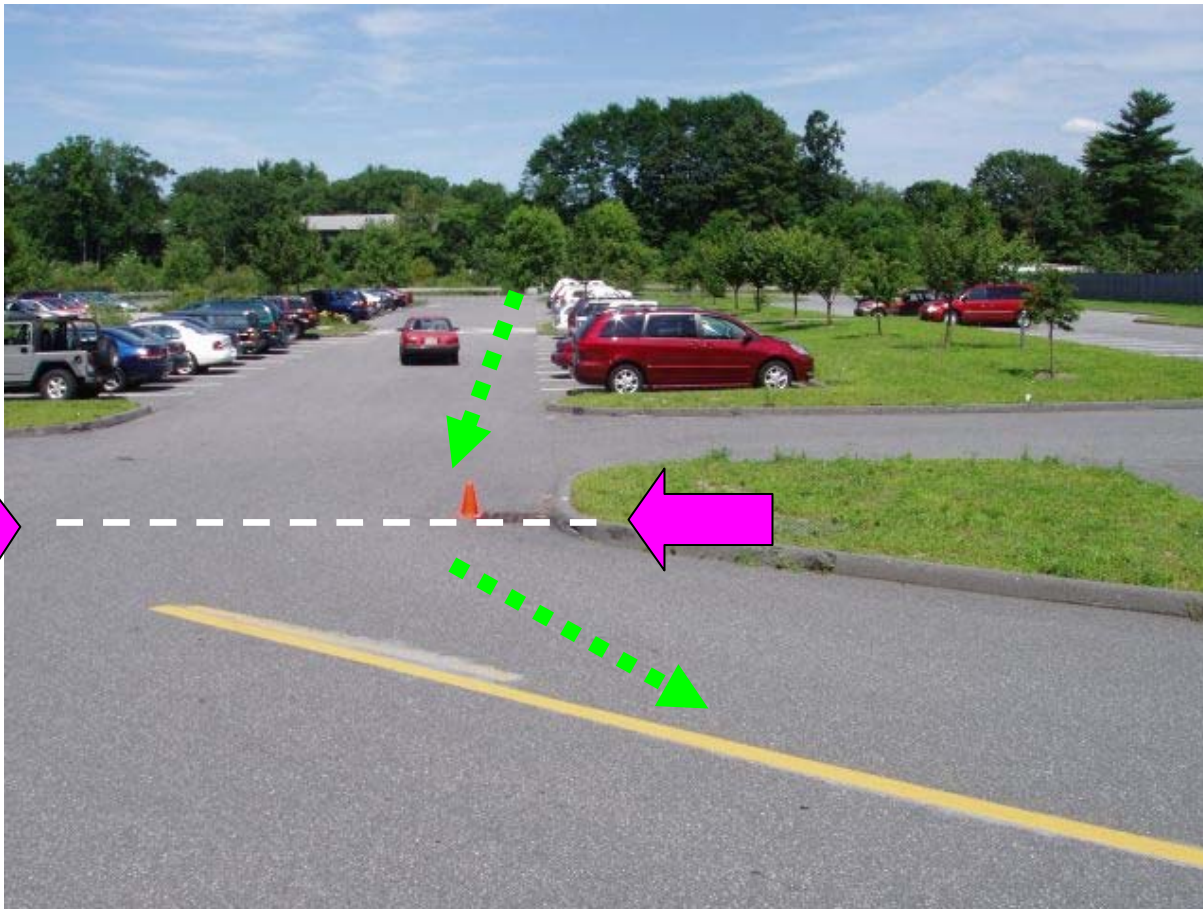


# Start location



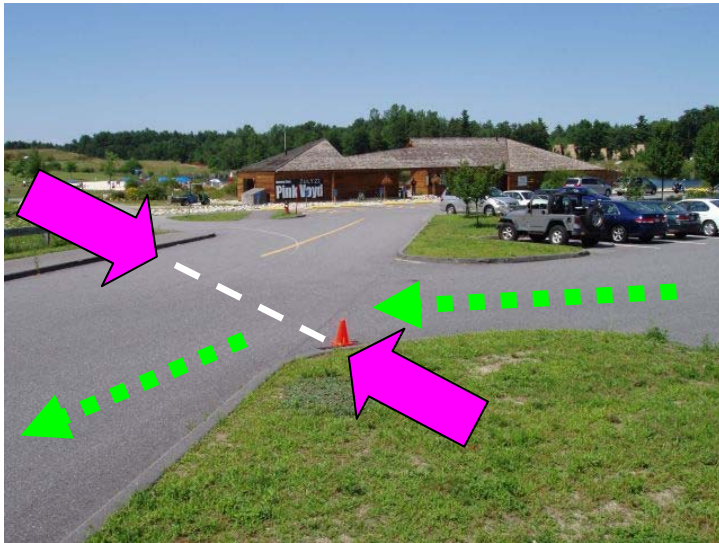
The leading edge of the storm drains on either side of the road mark the starting line.

# Mile 1

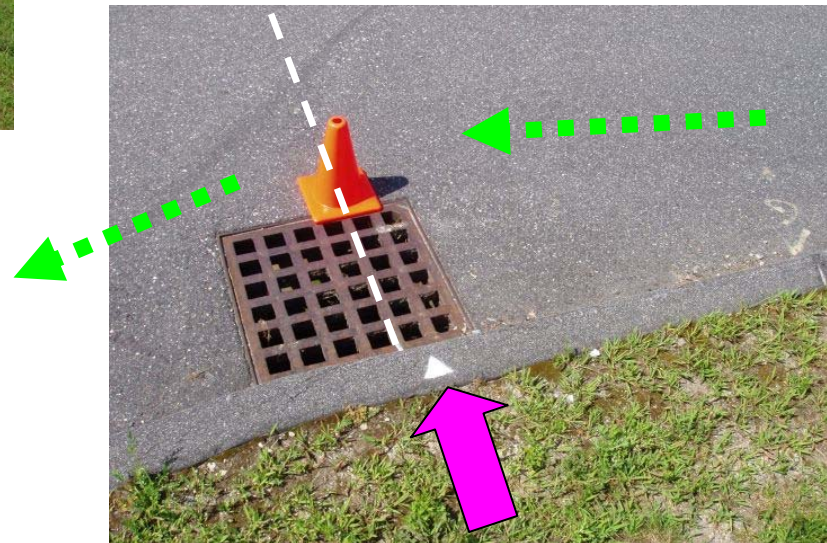


In the driveway,  
by entrance to  
NARA Park; on  
the first storm  
drain.

# Mile 1

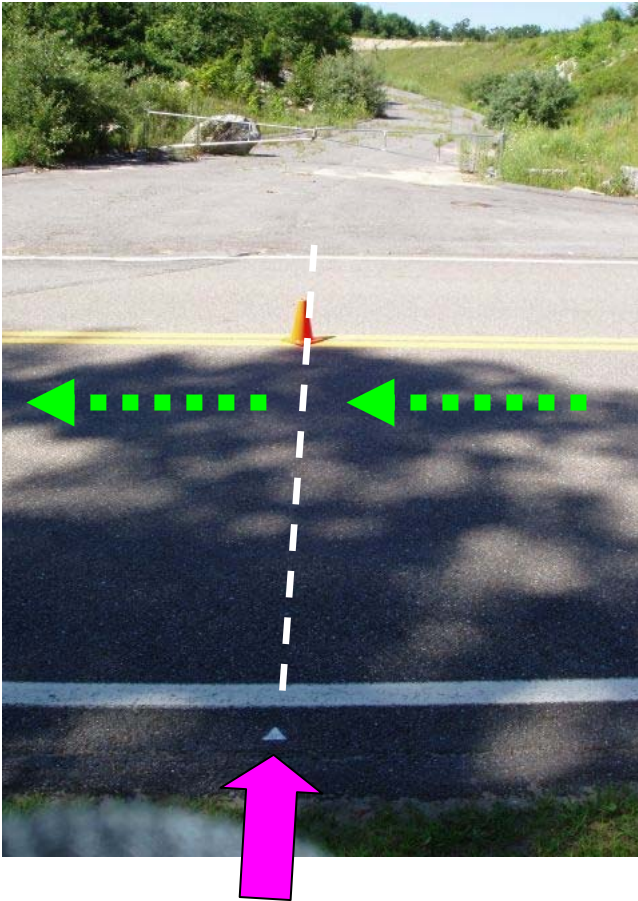


In the driveway entrance to NARA Park; on the first storm drain; white triangle is painted on curb.

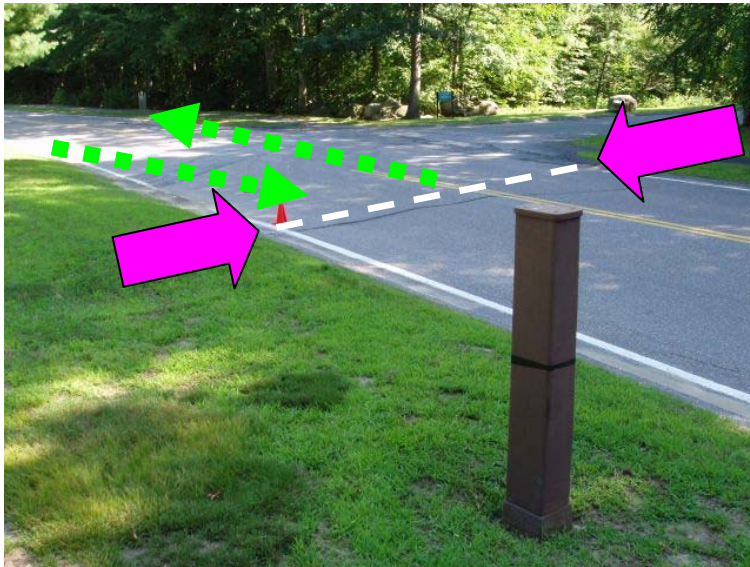


# Mile 2

On Nagog Park Rd; at entrance of construction site and swing gate; white triangles are painted on both sides of road to mark position; runners head toward turnaround

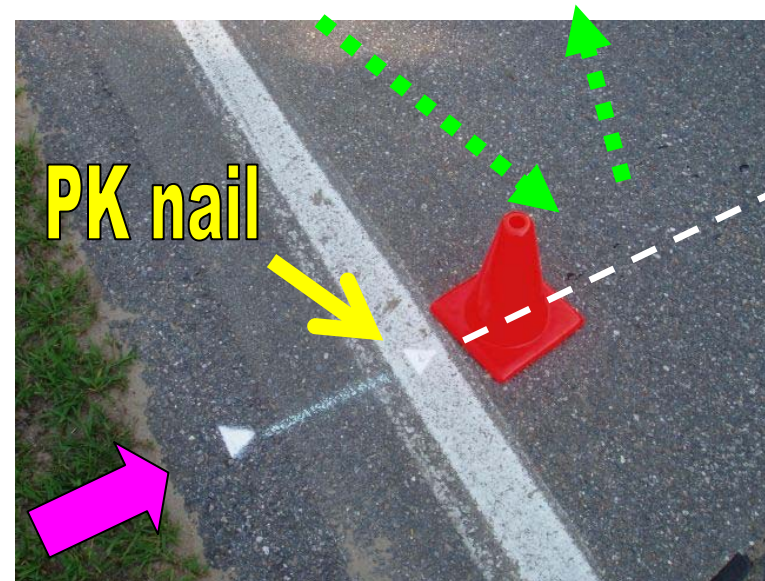


# Turnaround



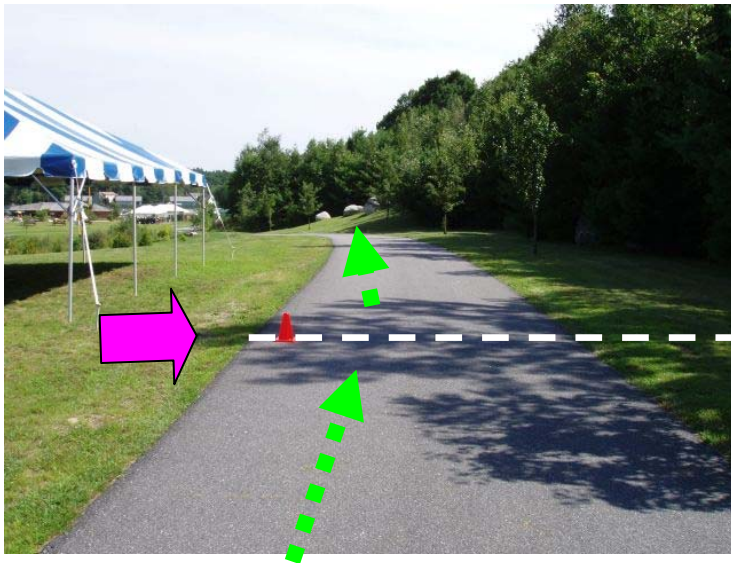
On Nagog Park Rd; between service entrance driveways for SeaChange at 50 Nagog Pk and Corning at 45 Nagog Pk. PK nail and paint mark the turnaround.

PK nail is 30.5' before brown electric box; 13.9' past water cover in road; 49.6' before granite survey marker across street.



# Mile 3

On path to snackbar/park office building; just before blue and white tent; white triangle marks mile 3;



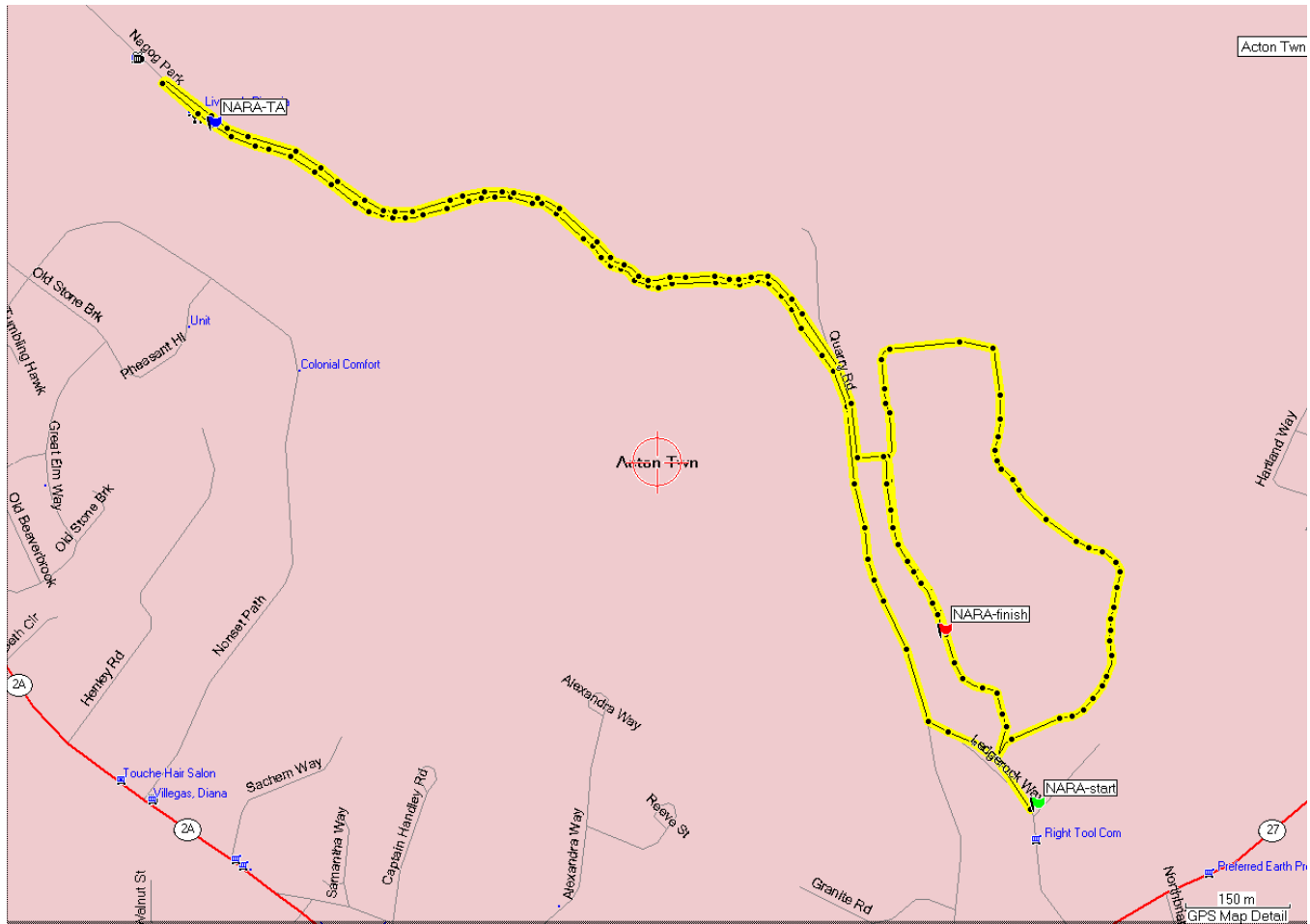
Slightly past columns on the far right-side of stage;

# Finish location

Finish on path heading toward snack bar; by the first of two white tents; PK nail and paint mark finish; 42.0' from tent pole #1; 47.9' from tent pole #2;



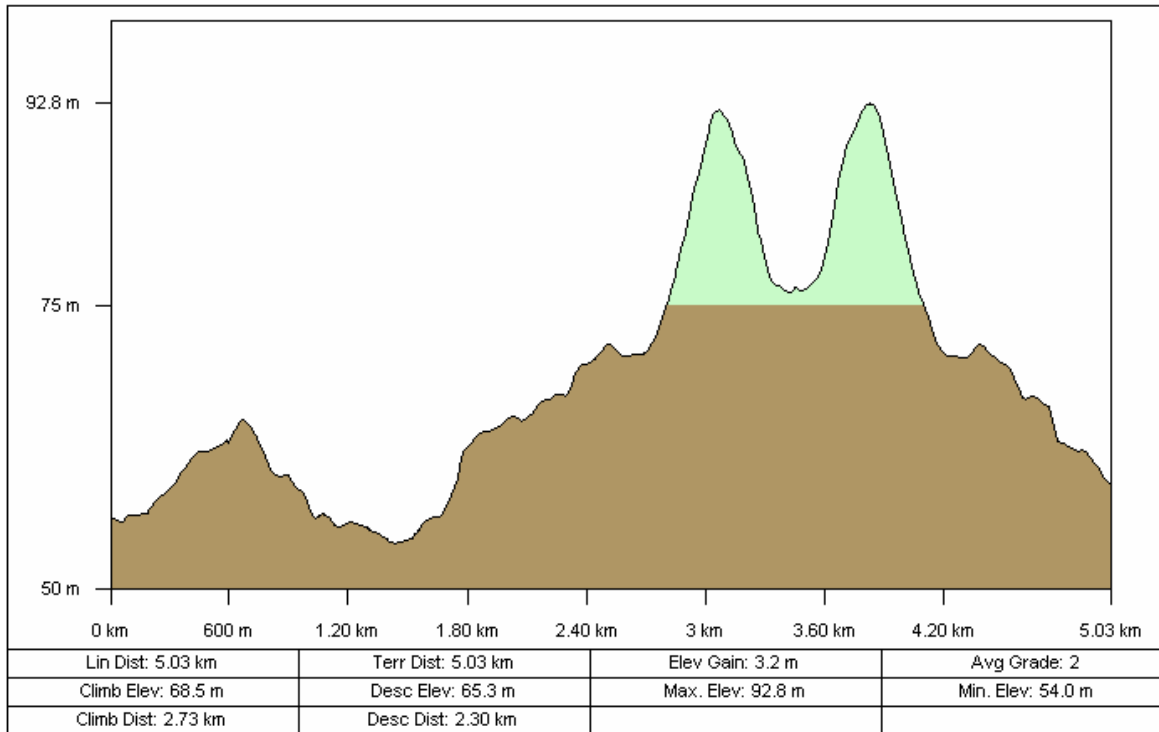
# Rough Course Map



# Rough Course Profile



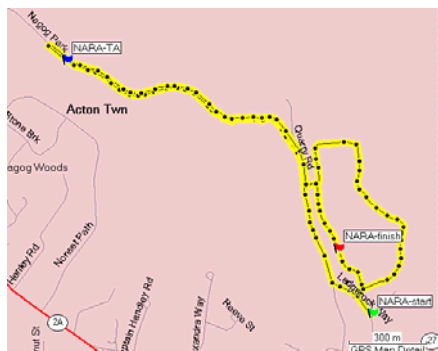
Topo USA® 6.0



Data use subject to license.  
© 2006 DeLorme. Topo USA® 6.0.  
[www.delorme.com](http://www.delorme.com)

# Course Description

Start on Ledgerrock Way. Leading edge of the storm drain marks start. Runners head toward NARA parking lot entrance and turn right. Then, left onto paved path before the showers/changing facilities. Go past stage, soccer fields, then right onto gravel path by baseball field. Stay on gravel path around the pond until ends by the main parking lot.



Runners head across parking lot, exit NARA Park, turn right up Ledgerrock Way, then right onto Quarry Road. Pavement on Quarry Road ends. Runners go through stone pillars and follow path through Town Forest.

Town Forest path ends at Nagog Park. Continue to turnaround then return through Town Forest to Quarry Rd, left on driveway entrance to soccer fields and right on paved path toward snack stand/park office building.

Finish by first white tent on right. PK nail and paint mark the finish.

For more information, contact

[Justin Kuo](#) (617-731-9889)

# # #

