

# Groton 10K Road Race, Groton MA

Detail of Start, Finish & Splits

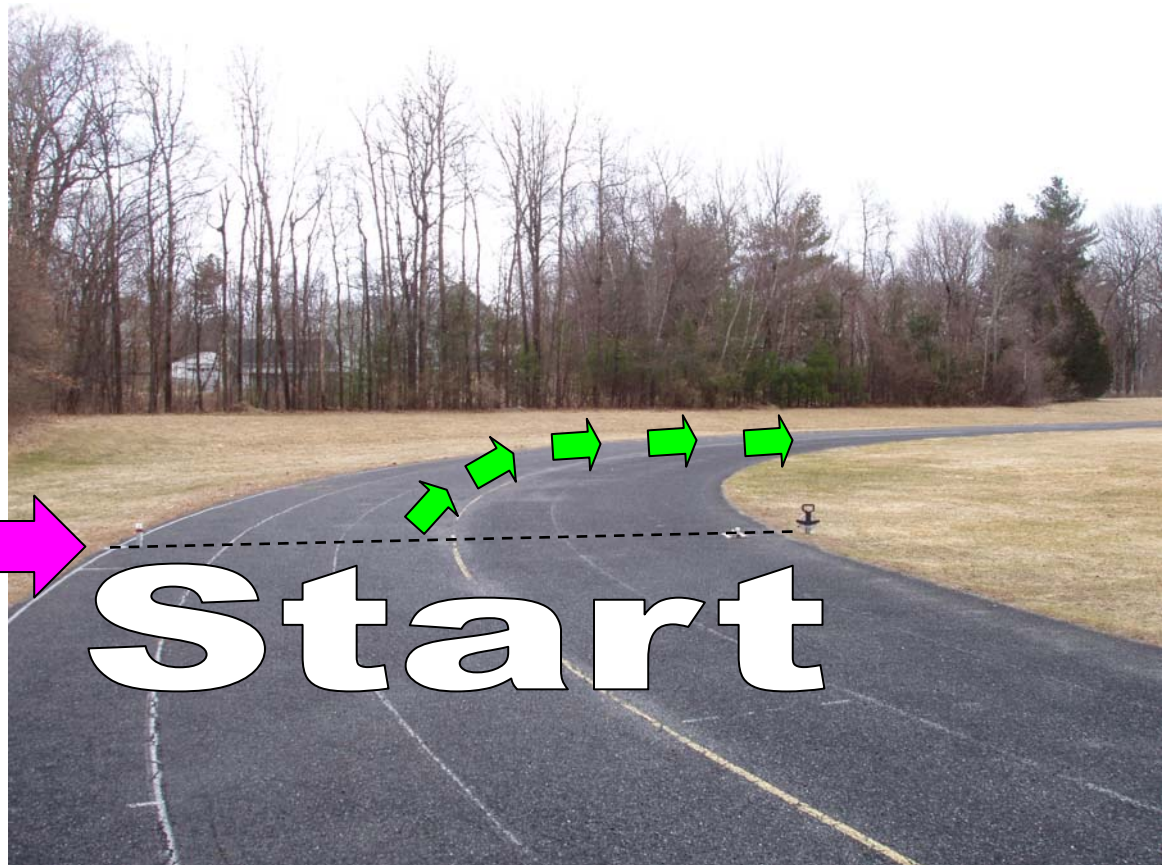
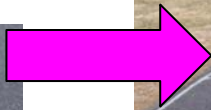
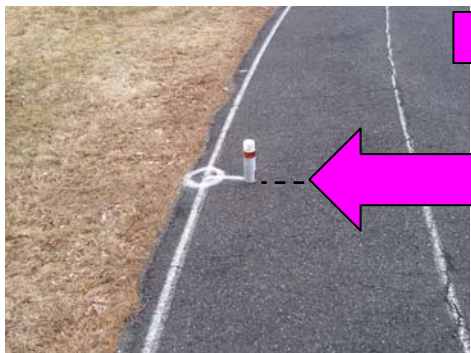


USATF Certification MA06003JK  
(Expires 31 Dec 2016)  
Measured 15 March 2006 by  
Justin Kuo <[jkuo@usatfne.org](mailto:jkuo@usatfne.org)>

# Start location

On track; 56.5m before track common start/finish line  
(as measured inside lane 1).

PK nail and  
paint on outside  
of track's lane 6



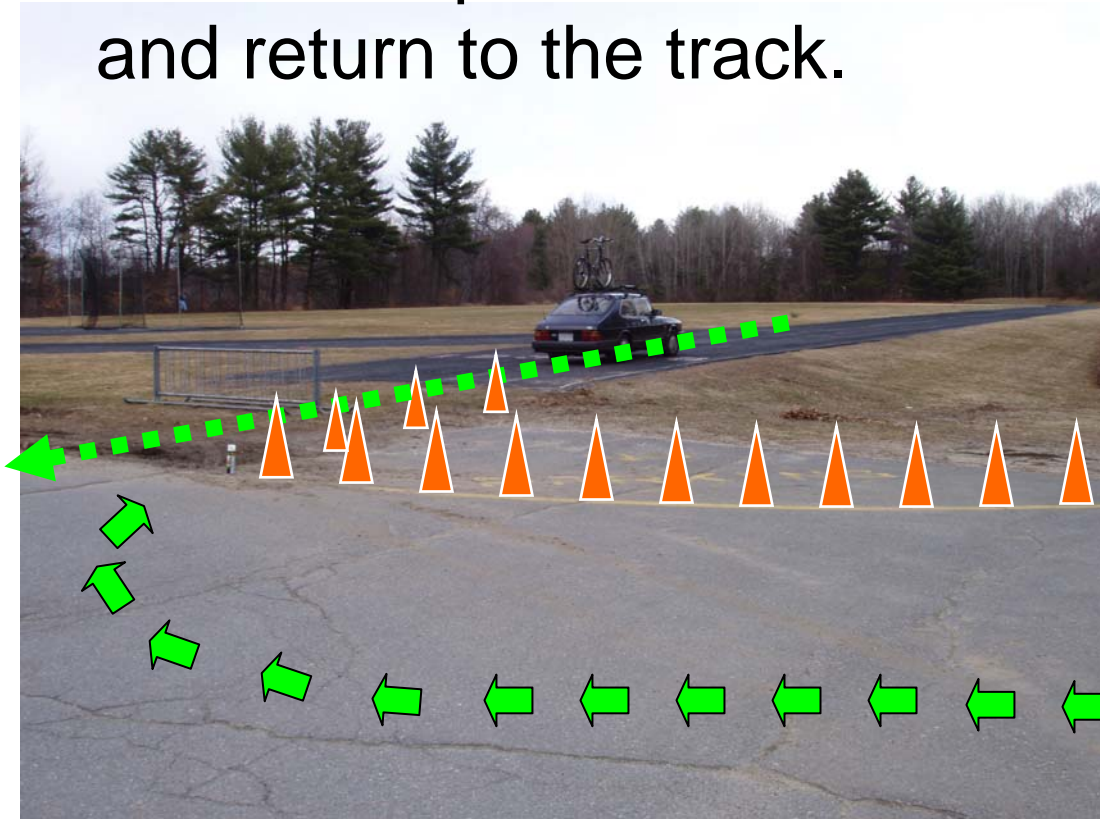
# Start location

10k start is 56.5 meters (185' 5") before the track common start/finish line;  
5k start is 2.7 meters (8' 10") past common s/f line.



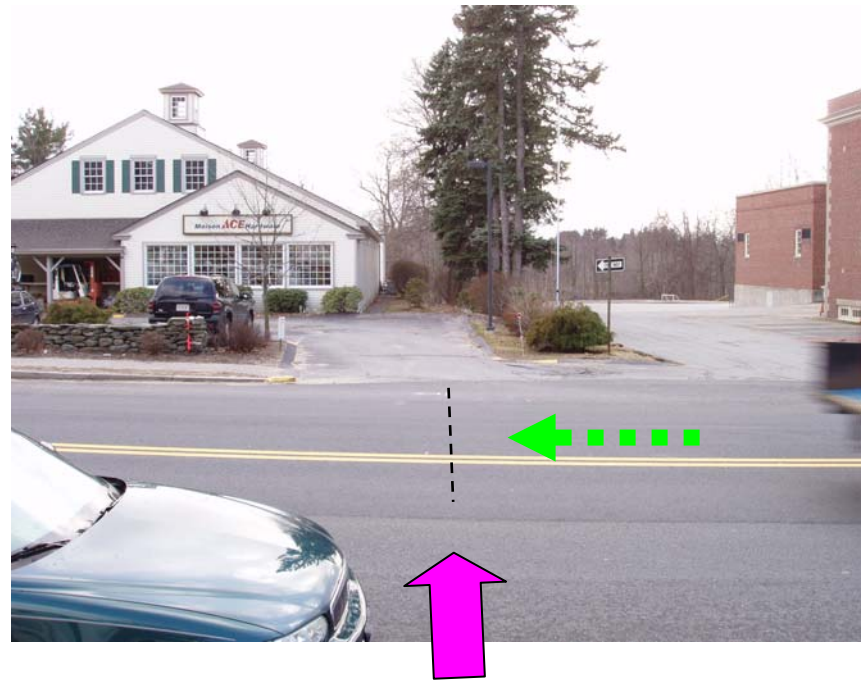
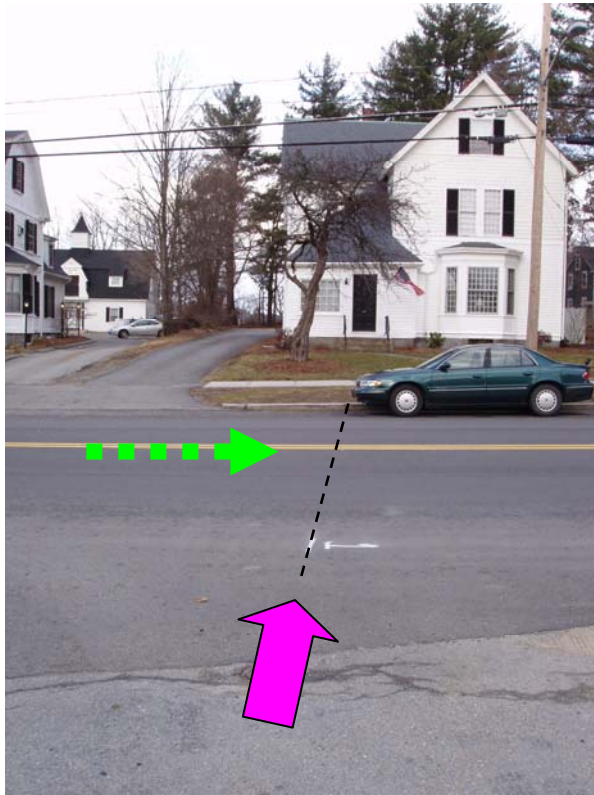
# Entrance/Exit from track

- Cones keep runners on course as they leave and return to the track.



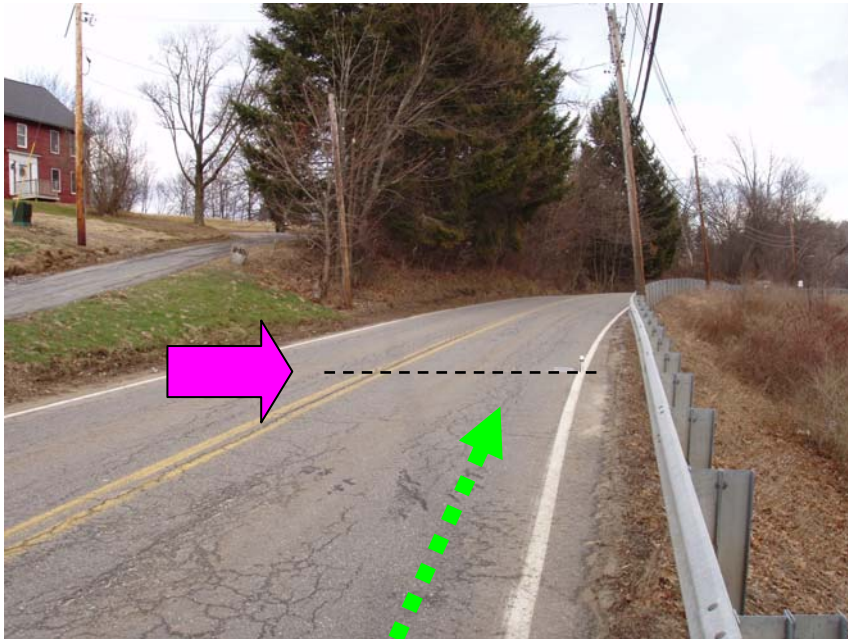
# Mile 1

On Main St (Rt 225); by driveway entrance to Ace Hardware; aligns with water cover in by driveway entrance; opposite #140 Main St.



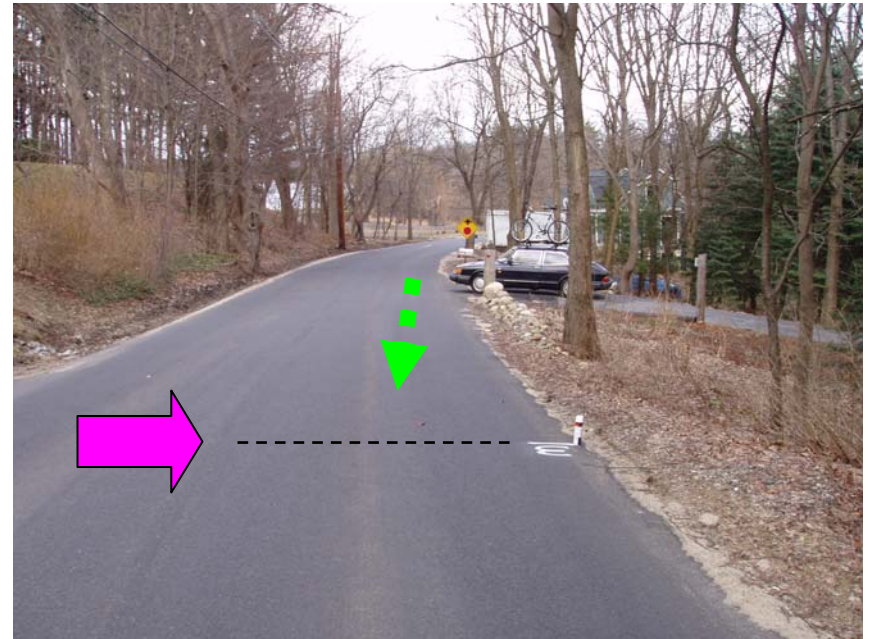
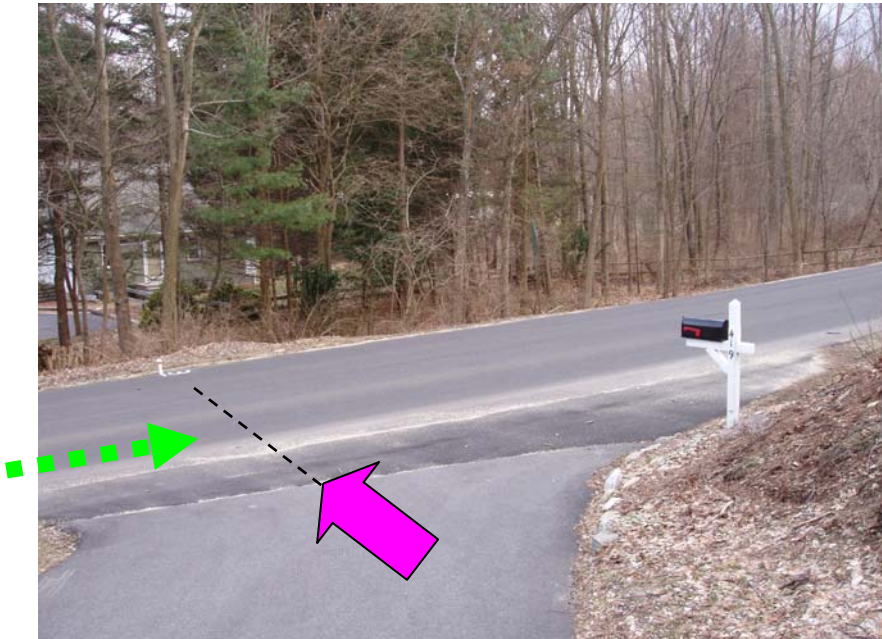
# Mile 2

On Lowell Rd (Route 40), opposite #248 Lowell Rd.; 17m past U.P. #40; 12m before U.P. #41



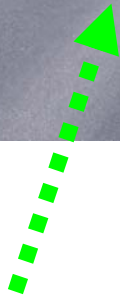
# Mile 3

On Martin's Pond Rd; before Orchard Ln; just past #426 Martin's Pond Rd; opposite driveway to #419 Martin's Pond Rd.



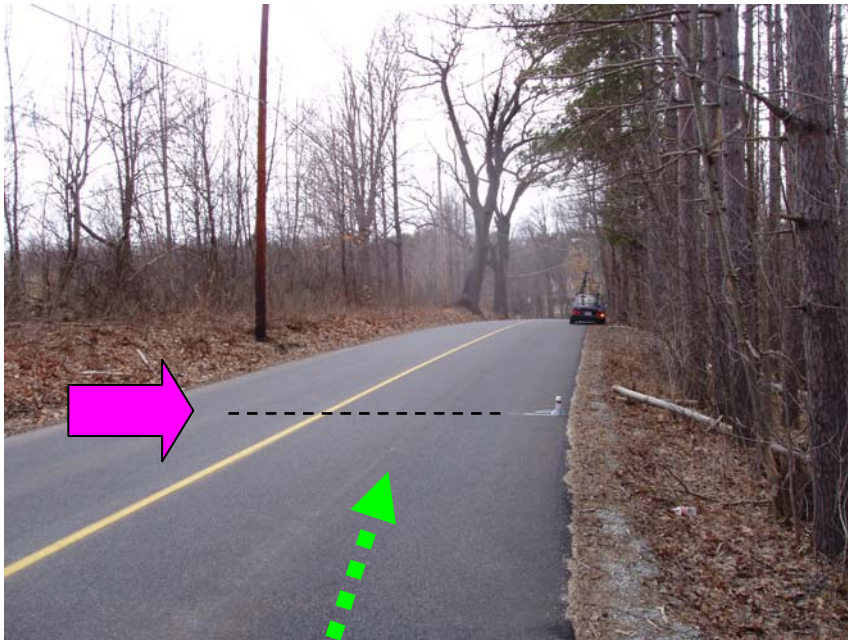
# 5 km

On Martin's Pond Rd; just past Orchard Ln; 53m past storm drain by Orchard Ln; past U P #59; before U.P. #58



# Mile 4

On Martin's Pond Rd; past #162 Martin's Pond Road;  
approx. 14m before U.P. #25



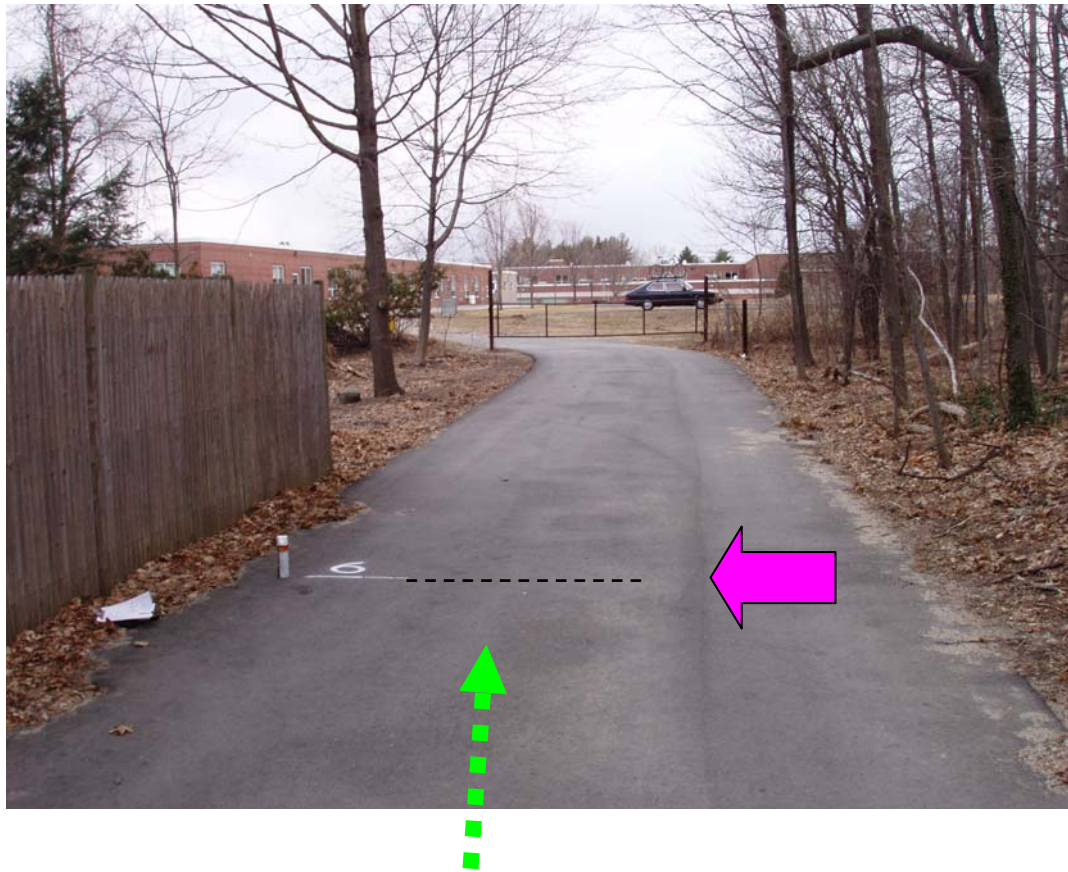
# Mile 5

On Breakneck Rd; 29m past fire hydrant on right;  
76m before dirt path on right.



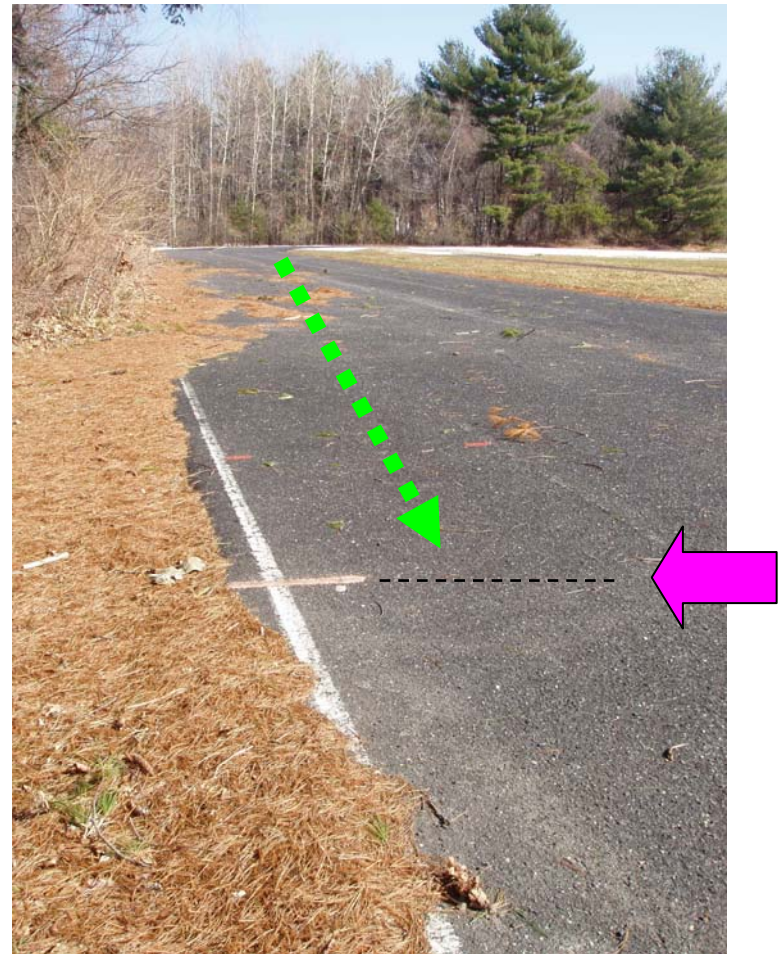
# Mile 6

On paved path just before 29 Champney St, leading to school and track. 27.3m (89' 7") before steel gate



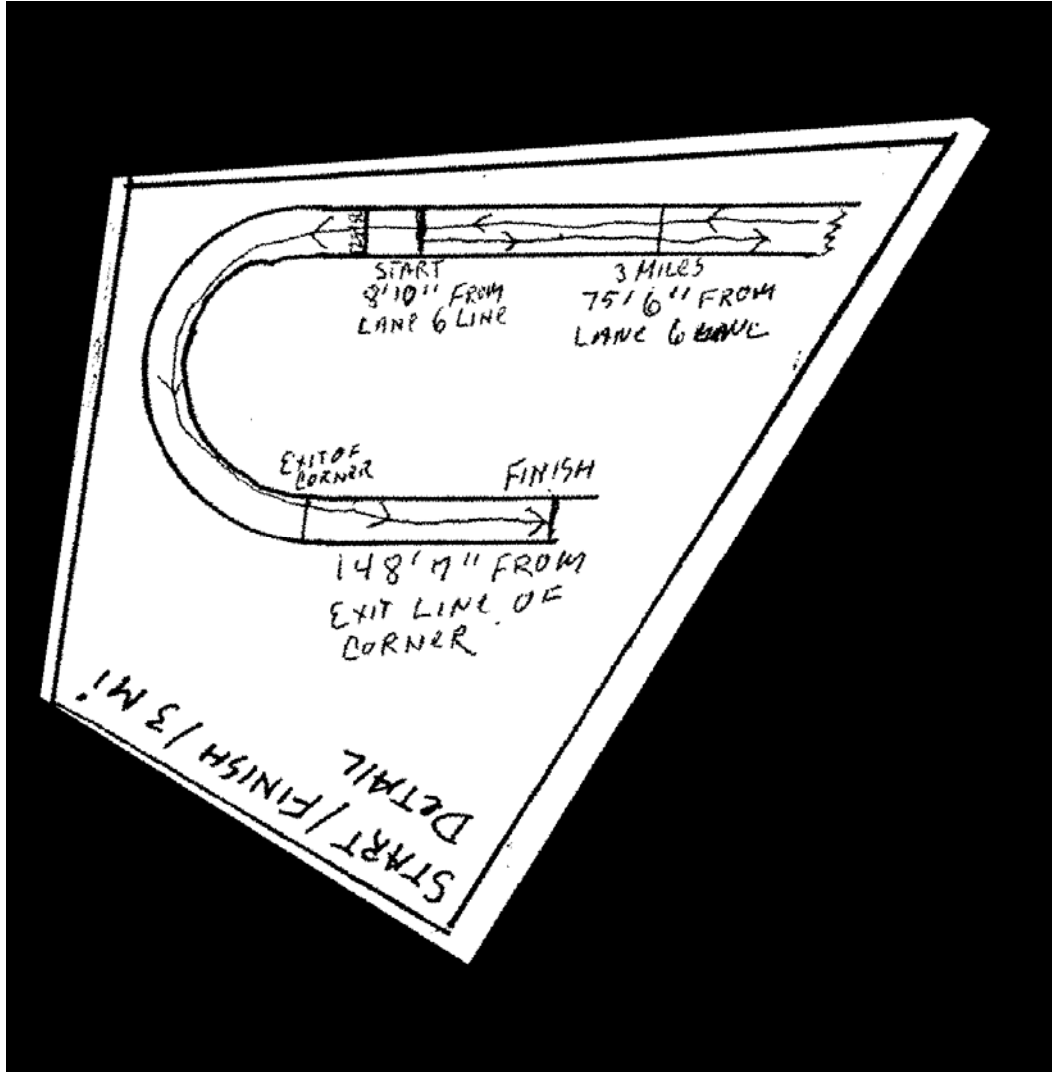
# Finish

10K and 5K share same finish line; PK nail is located on back side of track; 43.3m (148' 7") from exit line of corner (track's 1500m starting line)



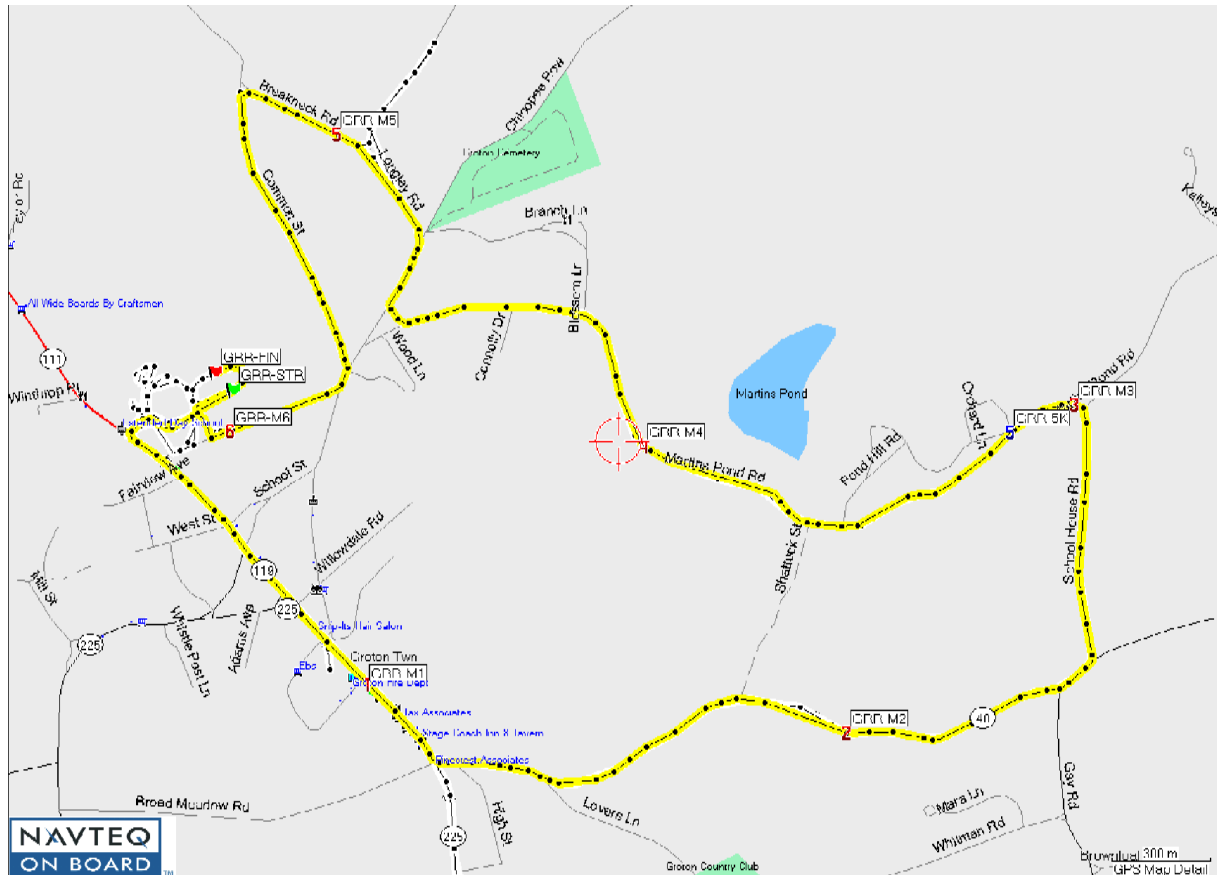
# Finish

Detail of finish (from 5k certification, MA97002RN)



# Course Map

(to be replaced by detailed map)





For more information, contact  
Justin Kuo (617-731-9889)

# # #