

Hingham 4th of July Road Race, Hingham MA

7472.87 meters
(4.643 miles)

Detail of Start,
Finish & Splits



USATF Certification
MA06011JK
(Expires 31 Dec 2016)
Measured 14 Jun 2006 by
Justin Kuo <jkuo@usatfne.org>

Start location

Start in the entrance circle at the Hingham Middle School. The edge of the storm drain marks the start location. Runners head toward Main St and turn left.

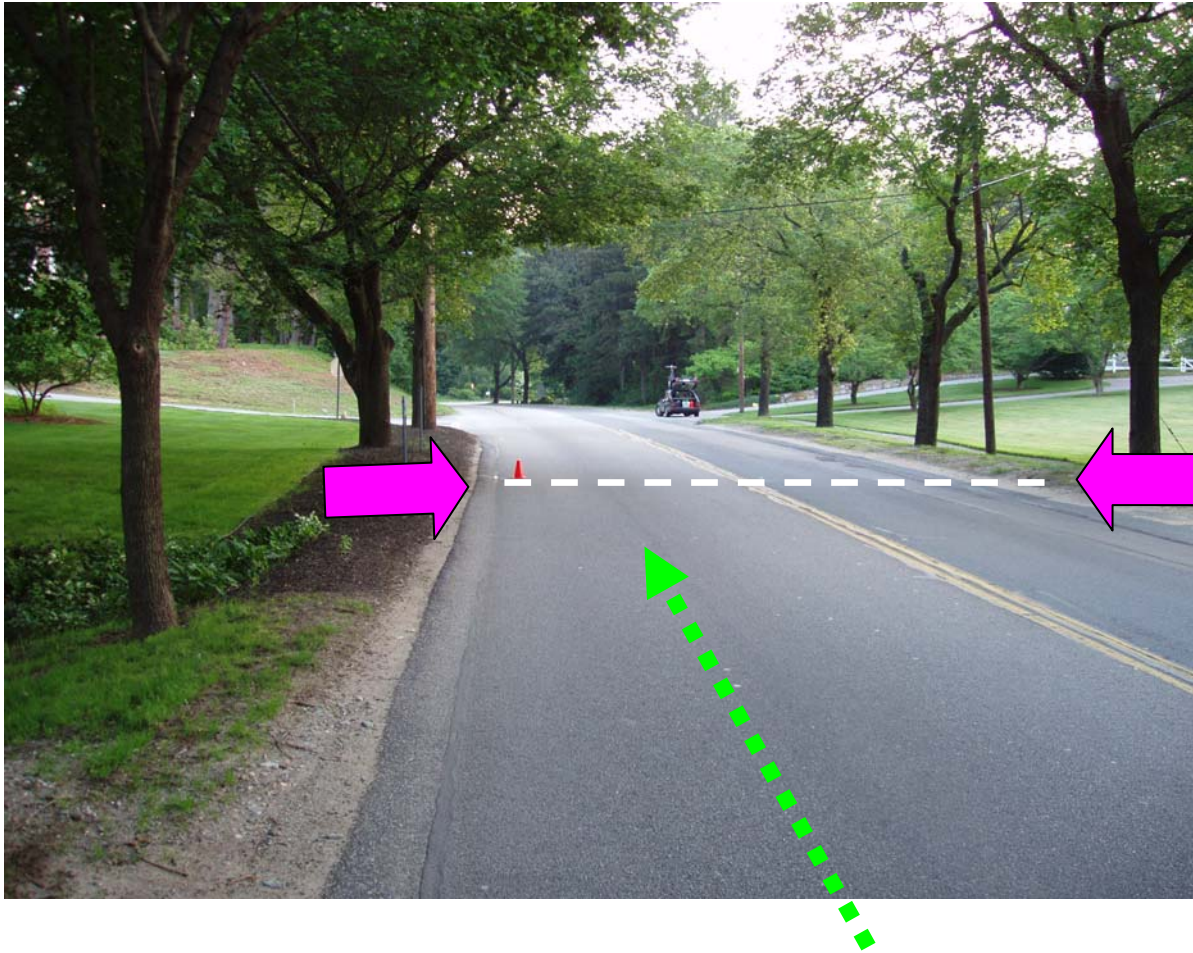


Start location



Curved starting line allows all runners to cover the same distance.

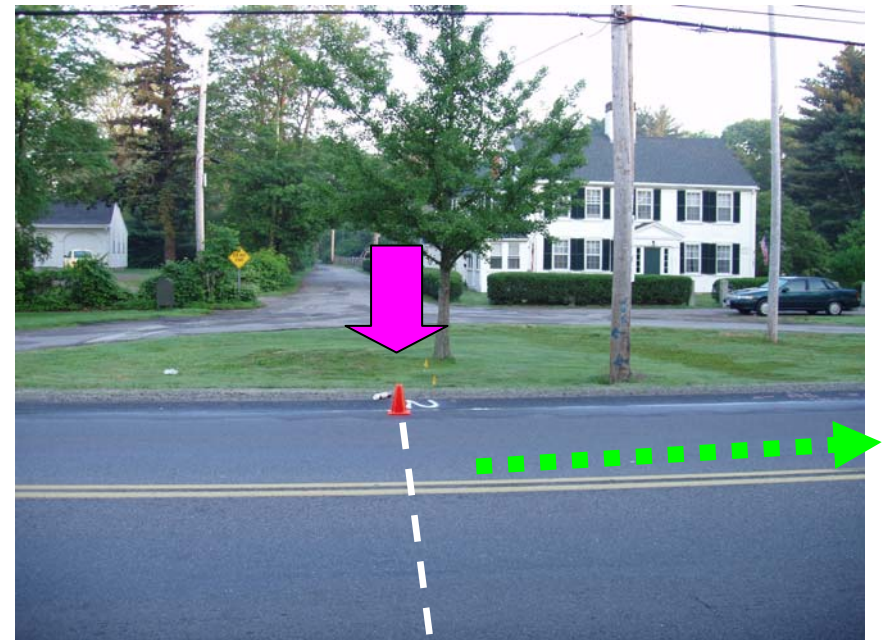
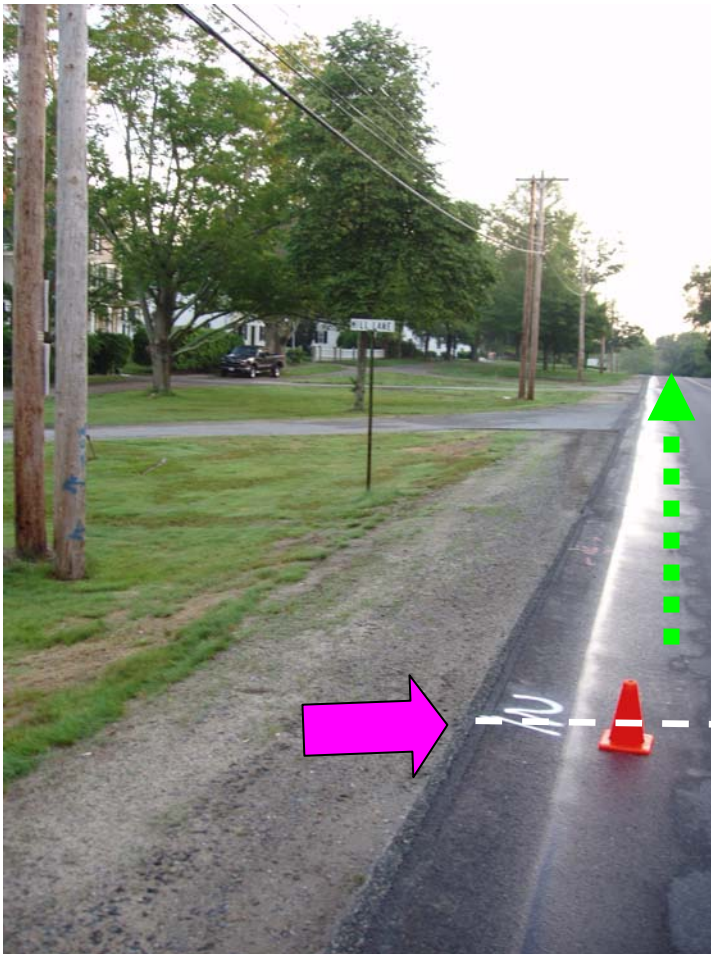
Mile 1



On Main St, by
#919 Main;
opposite #934
Main; 22m
before S.D. on
Highfield Rd;
15m before U.P.
#162.

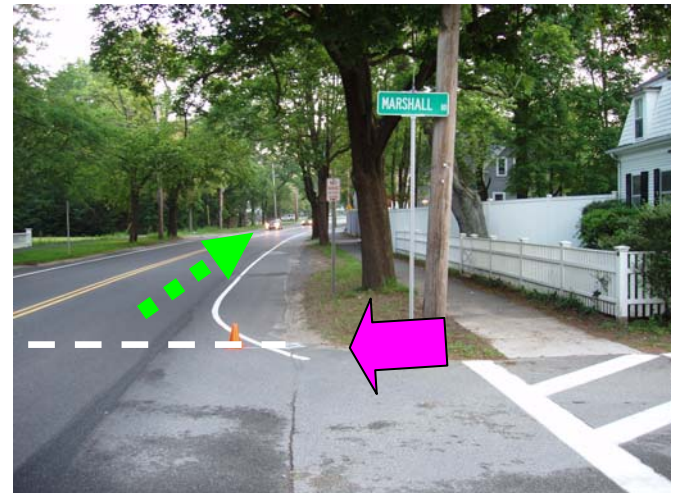
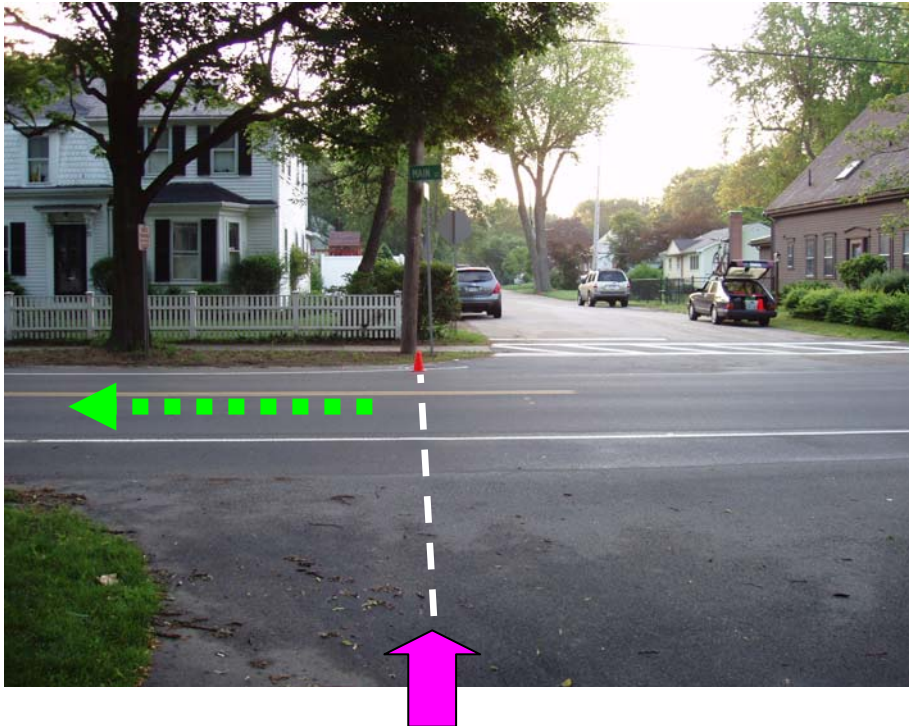
Mile 2

On Main St, by #709 Main;
opposite #704 Main; just before Mill
Ln; 4m before U.P. #1115



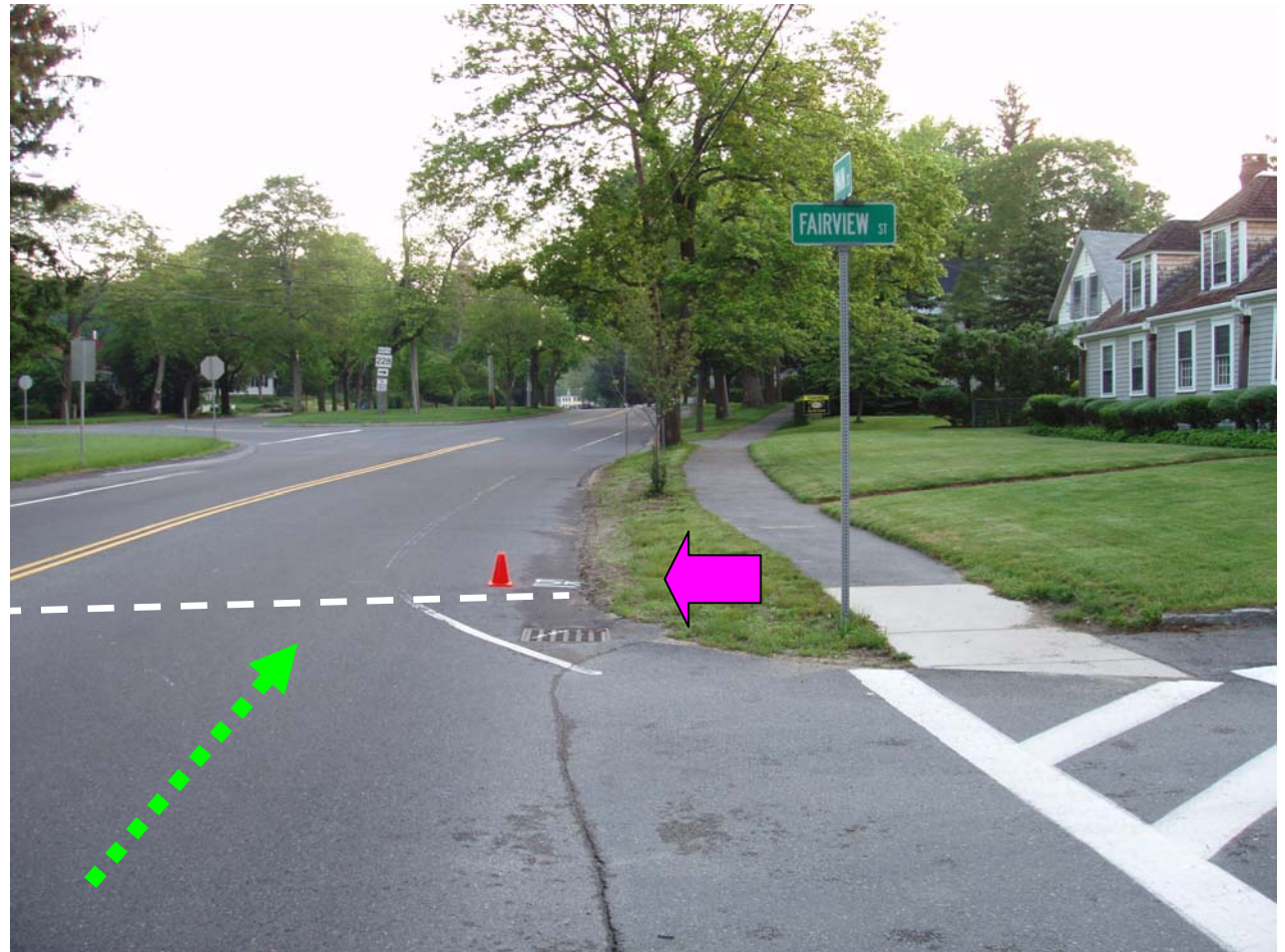
Mile 3

On Main St, just past sign for Marshall Rd; by U.P.
#73; opposite #497 Main;



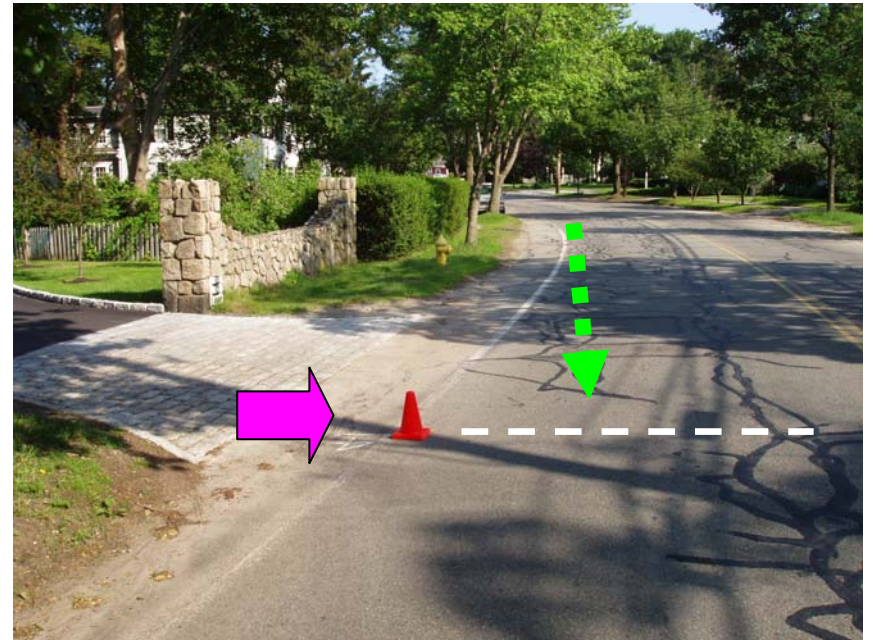
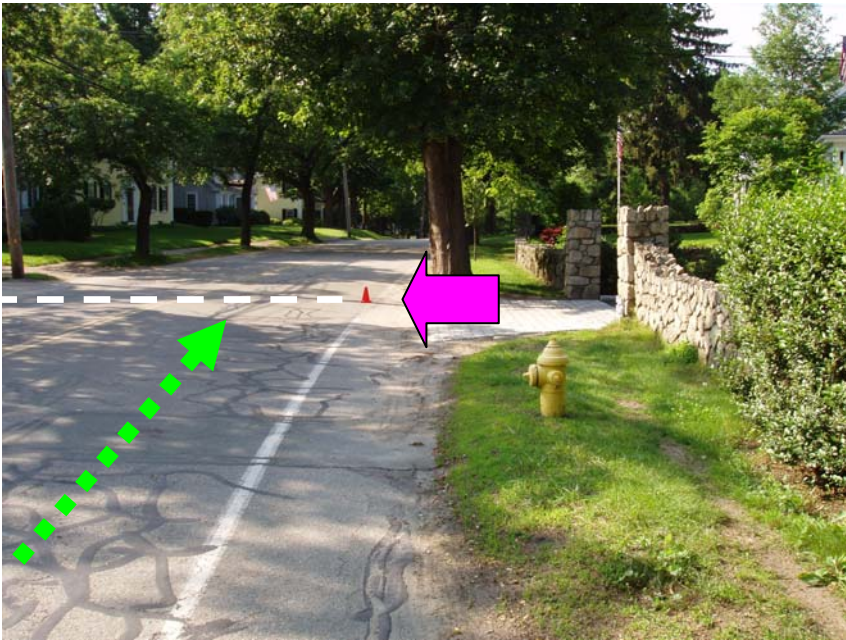
5 Kilometer

On Main St, by
#472; opposite
#475; 2m past
S.D. by
Fairview St.;



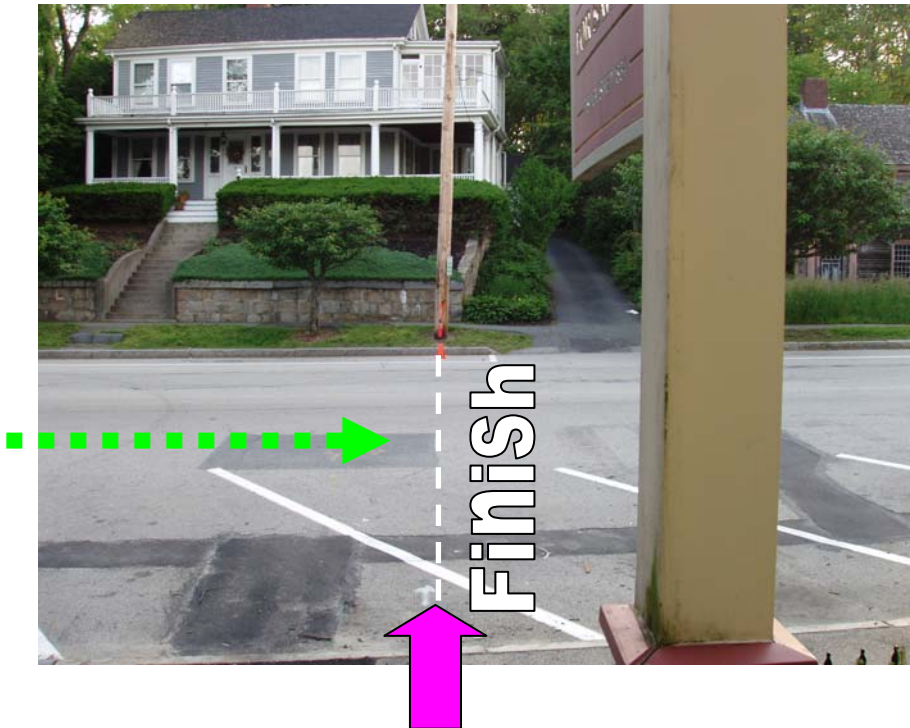
Mile 4

On Main St; in driveway for #244, 246 and 248
Main; opposite #247 Main; 4m past fire hydrant;

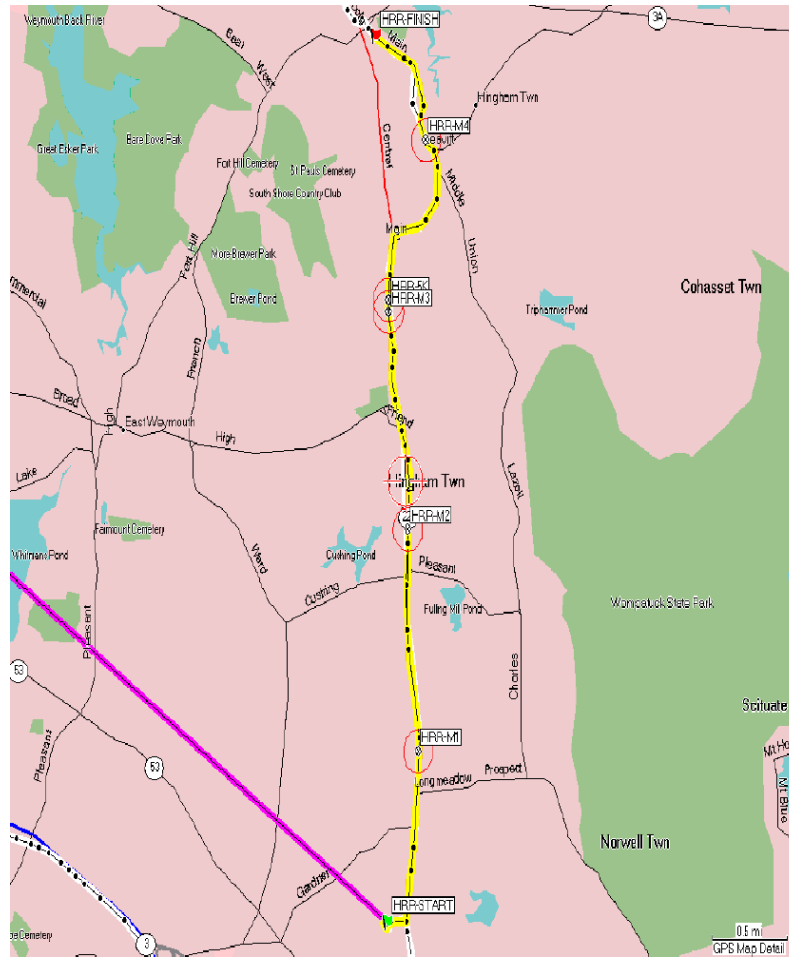


Finish location

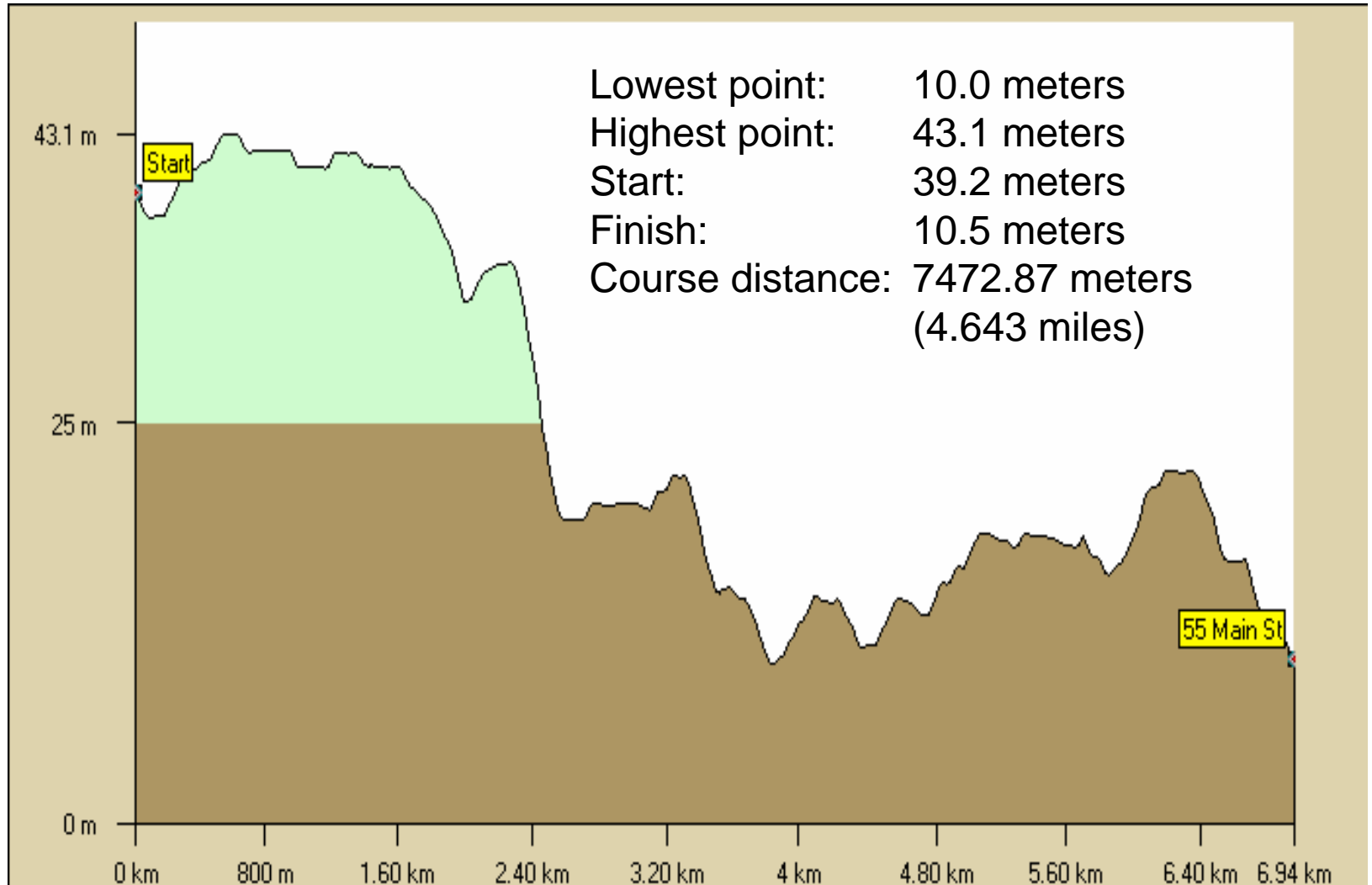
Finish on Main Street; PK nail and paint by U.P. at #28 Main; opposite Hingham Institution for Savings building. On race day, runners finish under US flag strung between the bank cupola and the U.P.



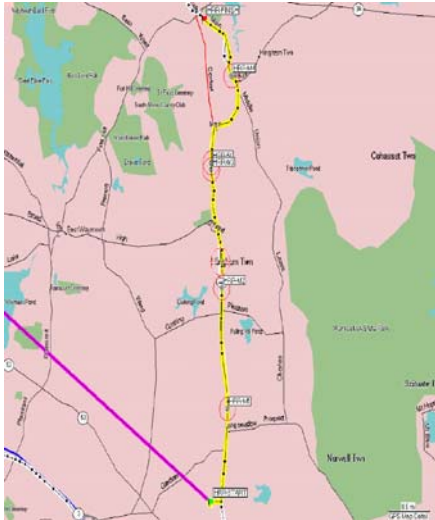
Rough Course Map



Rough Course Profile



Course Description



Start in the traffic circle at the entrance of Hingham Middle School on Rosemary Lane. The edge of the storm drain by the island marks the start location. Runners head toward Main St and turn left onto Main St.

Runners remain on Main St, may use the full width of the road and many take the shortest path around traffic islands.

Finish on Main Street between the Hingham Institution for Savings building on the left and an unmarked U.P. on the right. On race day, runners finish under US flag strung between the bank cupola and the U.P.

For more information, contact

[Justin Kuo](#) (617-731-9889)

#

